



Bob Heater
Safety Consultant
Certified Safety Professional

Safety Inspections

February 9, 2017

Basic Purpose of Inspections

“To insure that **standards** are met and, as a positive measure, to evaluate **supervisory** activity in the area of **accident prevention**.”

National Safety Council



SAFETY 4U

2

Safety Inspection Objectives

- Spotlighting unsafe conditions;
- Focusing on eliminating unsafe work practices and behaviors;
- Revealing the need for new safeguards; and
- Involving many more employees in the safety program.

SAFETY 4U

3

Inspections Enable You To:

- Reevaluate the safety standards of your company;
- Compare safety results against safety plans;
- Gauge the relative success of training efforts; and
- Anticipate problems in advance of any **OSHA** inspections.

SAFETY 4U

4

OSHA's Top 10 – FY 2016

1. Fall Protection – General Requirements
1926.501
2. Hazard Communication – 1910.1200
3. Scaffolding – 1926.451
4. Respiratory Protection – 1910.134
5. Lockout/Tagout – 1910.147

SAFETY 4U

5

OSHA's Top 10 – FY 2016 (cont'd)

6. Powered Industrial Trucks – 1910.178
7. Ladders – 1926.1053
8. Machine Guarding – 1910.212
9. Electrical – Wiring Methods – 1910.305
10. Electrical – General Requirements –
1910.303

SAFETY 4U

6

A Safety Inspection Program Should Specify...

- How often to inspect
- What items to inspect
- What parts to inspect on each item
- What conditions to inspect
- Who will conduct the inspection

7

Supervisor Roles & Responsibilities

- Be familiar with safety and health policies and procedures
- Conduct regular inspections of your work area
- Provide feedback to employees on inspection findings



8

Objectives:

- Describe frequency of 4 types of safety inspections
- Describe what to inspect in a safety inspection
- Identify safety-related items revealed by recent inspections

9



FREQUENCY OF INSPECTIONS

10

4 Types of Inspections

1. Continual: every time you go through the department
2. Periodic: weekly, monthly, etc.
3. Intermittent/special: irregular intervals; triggered by special circumstances
4. General: for areas not receiving periodic inspections

11

WHAT TO INSPECT

12

What to Inspect (3Es)

- Equipment
- Environment
- Employee work practices



13

SAFETY 4U

Factors to Consider

- What is the potential for injury to employees?
- What is the loss severity potential of the problem?
- How quickly can the item or process become hazardous?

14

SAFETY 4U

Factors to Consider (cont'd)

- What is the past record of failure?
- Are there any required inspections?



15

SAFETY 4U

Safety Self-inspection Checklists

- Bad checklists ...
- Good checklists ...



16

SAFETY 4U

Sample of a "Bad" Checklist

- floors
- stairs
- electrical cords
- fans
- ladders
- fire extinguishers
- exits



17

SAFETY 4U

Sample of a "Good" Checklist

- Are compressed gas cylinders secured in a vertical position and valve caps in place?
- Is the evacuation plan conspicuously displayed in each room?
- Are portable electrical tools and equipment grounded or of the double insulated type?

18

SAFETY 4U

RECENT FINDINGS

19

SAFETY 4U

NFPA 101 - Life Safety Code



20

SAFETY 4U



Housekeeping



21

SAFETY 4U

Look Around



22

SAFETY 4U



Look Up



23

SAFETY 4U

Look Closer



24

SAFETY 4U



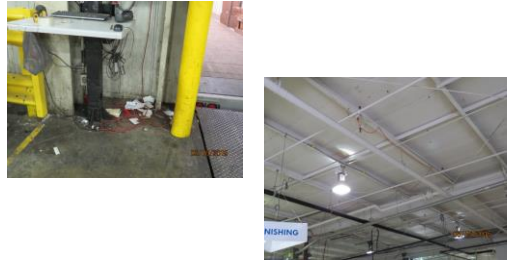
Look Ahead



25

SAFETY 4U

Extension Cords



26

SAFETY 4U

This is what it is all about.



27

SAFETY 4U



SAFETY 4U

rheater@woh.rr.com
937-418-5487