

TODAY I'M GOING TO TALK ABOUT SAFETY BASICS



Emergency Action Planning

Confined Space Entry

Powered Industrial Trucks (Forklift)

Hazard Communication

Resource Conservation Recovery
Act (RCRA)

IT'S A WHOLE NEW WORLD

Covid-19 induced turnover

Downsizing workforce

Doubling workforce

New responsibilities for current employees

Limited resources

- Lead time shrinkage
- Supply chain delays
- Cash





EMERGENCY ACTION PLAN

REALISTICALLY, WHAT EMERGENCIES COULD WE HAVE?

Fire

Injury

Active
Shooter

Chemical
Spill or
Release

Weather

TABLETOP PLANNING

Gather a group and talk through all the logistics of each specific emergency.

Outcomes:

- Resources we need
- Training we need
- Policies that need developed
- Communication
- Prevention ideas



TRAINING ON THE EMERGENCY ACTION PLAN

Specific skills for response teams:

- Fire brigade
- First aid, CPR, and AED
- Chemical response

Overall understanding for everyone.

Walk through the response and take head counts.



CONFINED SPACES

Assessment
Identification
Entry procedures
Rescue
Training



CONFINED SPACE ASSESSMENT



Walk through the entire facility
and look at everything



If it could be a confined space
complete a written assessment



There are areas for interpretation

Large enough to
enter

Access



BASED ON THE ASSESSMENT

Place labels at the access points.

Develop entry procedures:

- Lockout/Tagout
- Material Removal
- Voltage Testing
- Ventilation



CONFINED SPACE TRAINING

Entry Team

Rescue Systems

First Aid, CPR, AED

Use of Ventilation

Air Monitoring and
Calibration

Respiratory Protection



POWERED INDUSTRIAL TRUCKS



TRAINING



General training in the classroom



Complete a written test



Lift-specific training



3-year update



Retraining for incidents or observations

OTHER LIFT TECHNOLOGY

Operator login codes

Remotely enable or disable the lift

Damage or collision detection

LED lights





OSHA Top 10
citations

Most employees
have exposures

HAZARD COMMUNICATION

HAZCOM BASICS



Training to be functional

How do I handle it?

How do I store it?

What are the hazards and symptoms of exposure?

What do I need to wear working with it?

Find information



Training to be aware

Recognize chemicals

Understand how to avoid contact

SAFETY DATA SHEETS

Who is going to gather and maintain SDSs?

Where will they be located so employees can access them?

When do they get updated?

How will they be filed?



ANNUAL AUDIT

Conducted by the
program administrator

Interview employees

Chemical inventory

Observations of
behaviors

Check temporary
labeling

INTRO TO RESOURCE CONSERVATION AND RECOVERY ACT (RCRA)



- Promote and protect human health and the environment, conserve energy and resources.
- Reduce or eliminate the generation of hazardous wastes as expeditiously as possible.
- When hazardous waste is generated, hold the generator responsible through “**cradle-to-grave**” system.

“CRADLE TO GRAVE”

Recycling



Treatment



Disposal



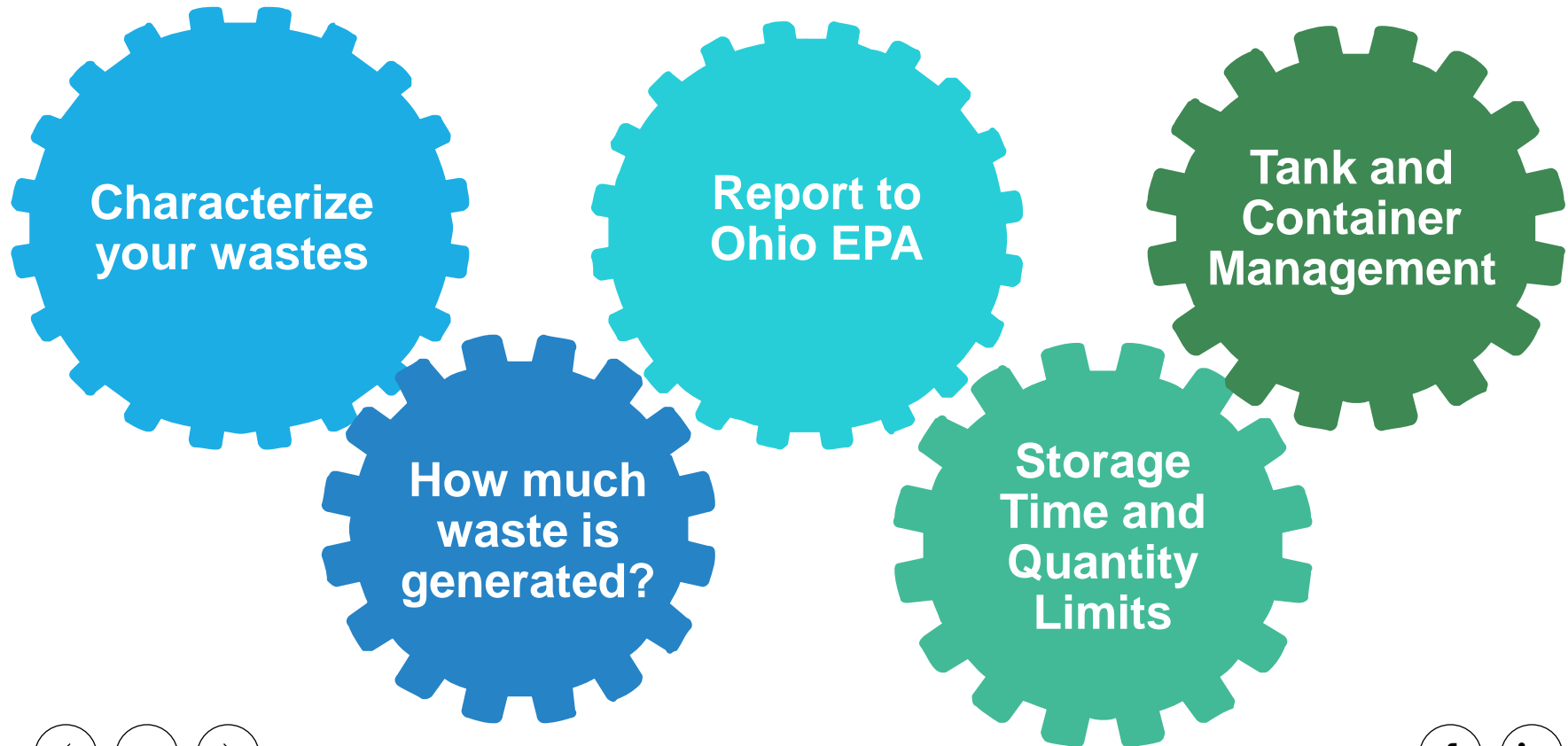
Hazardous Waste
Generation



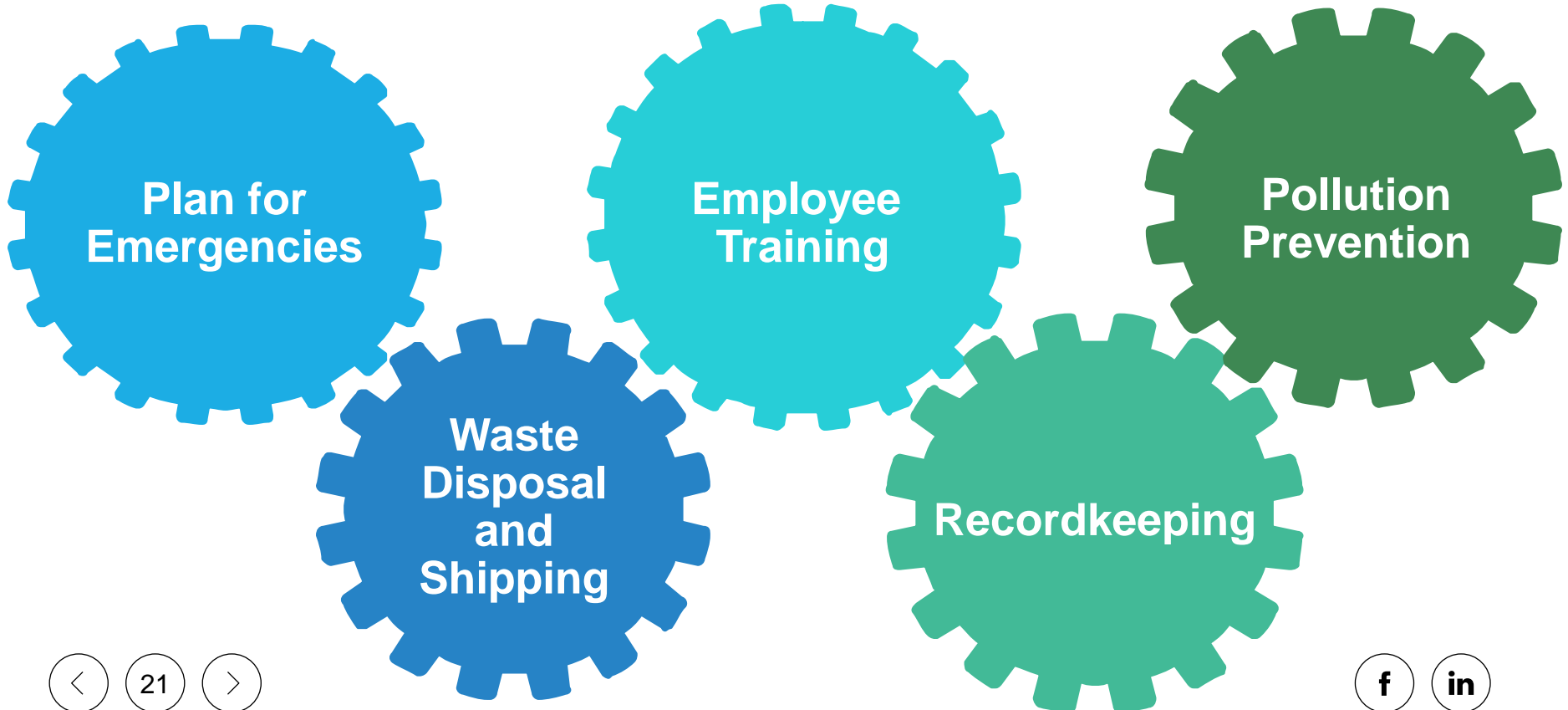
Hazardous Waste
Transportation



TEN PRINCIPLES OF HAZARDOUS WASTE MANAGEMENT



TEN PRINCIPLES OF HAZARDOUS WASTE MANAGEMENT (CONT'D)





Let us be your
health, safety and
environmental
resource.

www.Safex.us

@SafexInc on

